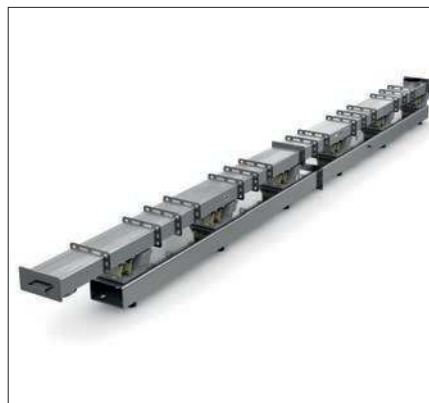


# Dosing Feeder from JOEST Quality Down to the Last Detail



# From Standard to Special Solutions

At JOEST you will find simple standard feeders up to complex special solutions. Each dosing feeder is individualized to the customer requests.



Fast  
Delivery



Flexible  
Configurable



An afford  
Alternative



Adaptable to  
Your Own Needs



## Industries

Dosing feeders can be adapted perfectly to the required conditions, and thanks to their special properties they are especially suitable for a number of specific industries.



### FOOD INDUSTRY

- Perfectly easy to clean
- Possible to screen out fine product
- Exact dispensing



### CHEMICAL INDUSTRY

- Adjustable power
- Compact design
- Course/fine dispensing



### PHARMACEUTICAL INDUSTRY

- Hygienic requirements (according to GMP)
- Easy to clean
- Exact dispensing of additives



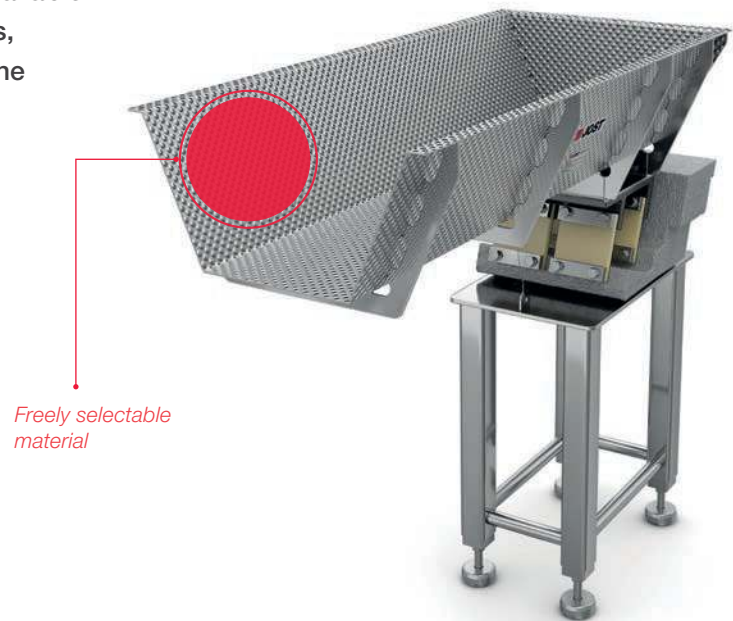
### PACKAGING INDUSTRY

- An affordable alternative to similar conveyors
- Course/fine dispensing

## Materials

We manufacture conveying troughs in all available materials – in most cases from stainless steels, since their special properties are required in the main industries.

- ☑ Stainless steels  
(1.4301, 1.4571, 1.4404, or similar)
- ☑ Normal steel
- ☑ Various coatings (PTFE, ETFE, or similar)



## Surface

Special requirements necessitate special surface properties, e.g., with regard to cleaning or conveying.

- ☑ Smooth surfaces with  $Ra \leq 0.8 \mu\text{m}$ ,  
achieved through grinding as required
- ☑ Conveying troughs made from textured  
sheet metal (e.g., ERON 6WL) to avoid sticking
- ☑ Coatings to improve conveying properties  
(PTFE, etc.)



## Optional Features

Our dosing feeders can be fitted with a wide variety of optional features to meet customer specifications.

- ☑ Funnels  
(various designs, e.g., with layer thickness slider)
- ☑ Transport frames
- ☑ Support, e.g., fixed or moving
- ☑ Swivel mechanisms
- ☑ Sleeves
- ☑ Plexiglas cover
- ☑ Exchangeable sifter lines in various sizes
- ☑ Material supply bunker (various designs)

*Diverse features upon request*



## Dosing Drives

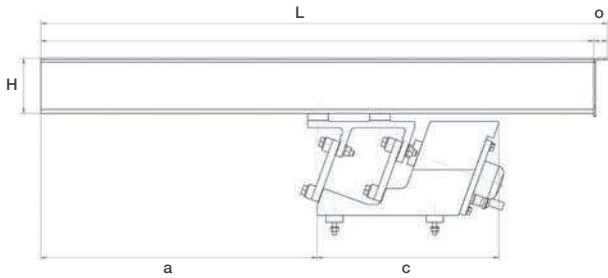
Drives are available in 4 different sizes: JD20, JD30, JD40, and JD50. The size of the drive depends on the weight and format of the conveyor.

- ☑ EX certification of dosing drives with the JDA (zone 22) and JDE (zone 21)
- ☑ Special coating available with stainless-steel properties (SSC1000)
- ☑ Multiple drives can be connected in series or adjacent to one another

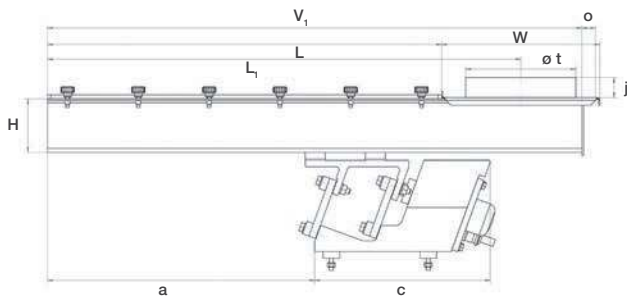


*Drives available in 4 different sizes*

# Normdosierrinnen



**Type A**  
Feeder trough without cover,  
without outlet socket



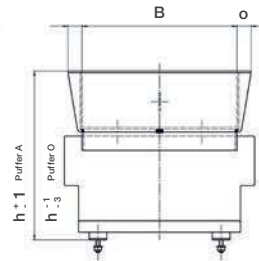
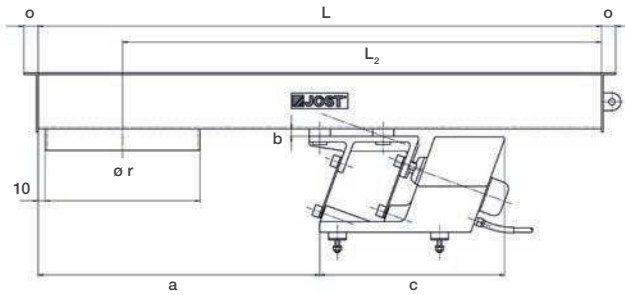
**Type B**  
Feeder trough with cover,  
without outlet socket

| Dimensions               |            |         |         |         |         |         |         |                      |                      |                      |         |         |           |           |                      |                      |         |         |
|--------------------------|------------|---------|---------|---------|---------|---------|---------|----------------------|----------------------|----------------------|---------|---------|-----------|-----------|----------------------|----------------------|---------|---------|
| Dosing Feeder<br>B/W x L | Drive      | a<br>mm | B<br>mm | c<br>mm | H<br>mm | j<br>mm | L<br>mm | L <sub>1</sub><br>mm | L <sub>2</sub><br>mm | L <sub>3</sub><br>mm | o<br>mm | q<br>mm | Ø r<br>mm | Ø t<br>mm | V <sub>1</sub><br>mm | V <sub>2</sub><br>mm | W<br>mm | Y<br>mm |
| FDL 60/35 x 400          | JD 20/25   | 249     | 60      | 178     | 35      | 20      | 400     | 360                  | 360                  | 320                  | 20      | 6       | 60        | 60        | 298                  | 318                  | 128     | 110     |
| FDL 90/50 x 500          | JD 20/25   | 340     | 90      | 178     | 50      | 20      | 500     | -                    | 445                  | -                    | 20      | 6       | 90        | -         | -                    | -                    | -       | -       |
|                          | JD 20G/25G | 340     | 90      | 178     | 50      | 20      | 500     | 445                  | 445                  | 390                  | 20      | 6       | 90        | 90        | 368                  | 388                  | 158     | 140     |
|                          | JD 30/35   | 278     | 90      | 214     | 50      | 20      | 500     | 445                  | 445                  | 390                  | 20      | 6       | 90        | 90        | 368                  | 388                  | 158     | 140     |
| FDL 120/70 x 630         | JD 30/35   | 360     | 120     | 214     | 70      | 30      | 630     | 560                  | 560                  | 490                  | 20      | 8       | 120       | 120       | 468                  | 488                  | 189     | 170     |
|                          | JD 40/45   | 300     | 120     | 260     | 70      | 30      | 630     | 560                  | 560                  | 490                  | 20      | 8       | 120       | 120       | 468                  | 488                  | 189     | 170     |
| FDL 220/80 x 800         | JD 40/45   | 380     | 220     | 260     | 80      | 30      | 800     | -                    | 680                  | -                    | 20      | 10      | 220       | -         | -                    | -                    | -       | -       |
|                          | JD 40G/45G | 445     | 220     | 260     | 80      | 30      | 800     | 705                  | 680                  | 585                  | 20      | 10      | 220       | 165       | 590                  | 610                  | 237     | 270     |
|                          | JD 50/55   | 400     | 220     | 260     | 80      | 30      | 800     | 705                  | 680                  | 585                  | 20      | 10      | 220       | 165       | 590                  | 610                  | 237     | 270     |

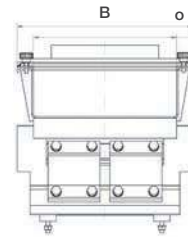
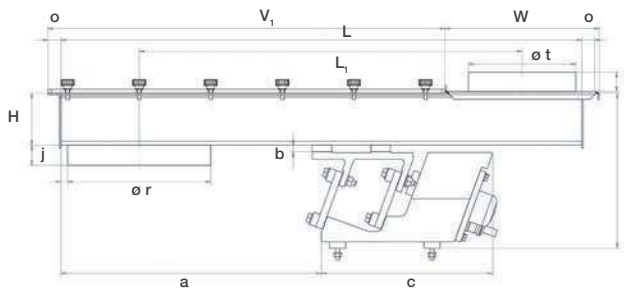
<sup>1</sup> Netzspannung von 42-230 V möglich.

<sup>2</sup> Dieser Wert ist ein Richtwert und bezieht sich auf Kunststoffgranulat, Schüttdichte 0,85 t/m<sup>3</sup> Körnung 3-4 mm.

# Normdosierinnen



**Type C**  
Feeder trough without cover,  
with outlet socket



**Type D**  
Feeder trough with cover,  
with outlet socket

| Technical Data   |               |                            |                  |        |                                |                                    |                   |
|------------------|---------------|----------------------------|------------------|--------|--------------------------------|------------------------------------|-------------------|
| Dosing Feeder    | Drive         | Mains voltage <sup>1</sup> | Supply frequency | Weight | Feeding capacity <sup>2</sup>  |                                    | X = without cover |
| B/W x L          |               | V                          | Hz               | kg     | S1 - 100%<br>m <sup>3</sup> /h | S3-50%/60<br>min m <sup>3</sup> /h |                   |
| FDL 60/35 x 400  | JD 20/25-50   | 230                        | 50               | 5,1    | 1,0                            | 1,4                                |                   |
| FDL 90/50 x 500  | JD 20/25-50   | 230                        | 50               | 5,7    | 1,6                            | 2,4                                | X                 |
|                  | JD 20G/25G-50 | 230                        | 50               | 8,6    | 1,1                            | 1,6                                |                   |
|                  | JD 30/35-50   | 230                        | 50               | 10,0   | 1,9                            | 2,7                                |                   |
| FDL 120/70 x 630 | JD 30/35-50   | 230                        | 50               | 11,2   | 3,2                            | 4,8                                |                   |
|                  | JD 40/45-50   | 230                        | 50               | 17,0   | 4,1                            | 6,0                                |                   |
| FDL 220/80 x 800 | JD 40/45-50   | 230                        | 50               | 21,0   | 6,4                            | 9,5                                |                   |
|                  | JD 40G/45G-50 | 230                        | 50               | 29,4   | 5,5                            | 8,3                                |                   |
|                  | JD 50/55-50   | 230                        | 50               | 34,5   | 7,8                            | 10,8                               |                   |
| FDL 60/35 x 400  | JD 20/25-60   | 230                        | 60               | 5,1    | 1,2                            | 1,5                                |                   |
| FDL 90/50 x 500  | JD 20/25-60   | 230                        | 60               | 5,7    | 2,2                            | 2,8                                | X                 |
|                  | JD 20G/25G-60 | 230                        | 60               | 8,6    | 1,7                            | 2,3                                |                   |
|                  | JD 30/35-60   | 230                        | 60               | 10,0   | 2,5                            | 3,3                                |                   |
| FDL 120/70 x 630 | JD 30/35-60   | 230                        | 60               | 11,2   | 4,4                            | 5,8                                |                   |
|                  | JD 40/45-60   | 230                        | 60               | 17,0   | 5,2                            | 6,7                                | X                 |
| FDL 220/80 x 800 | JD 40/45-60   | 230                        | 60               | 21,0   | 9,1                            | 11,6                               |                   |
|                  | JD 40G/45G-60 | 230                        | 60               | 29,4   | 8,0                            | 10,5                               |                   |
|                  | JD 50/55-60   | 230                        | 60               | 34,5   | 9,7                            | 13,0                               |                   |

# Thyristor Control Units - Series TK

A thyristor control unit must be used to operate electromagnetic drives.

The EMV-compatible control units from JVM allow electro-magnetic drives to be regulated continuously and without maintenance during operation

### Flexible regulation

Output value can be set for all JVM controllers either via potentiometers or via analog signals 0-10V, 0-20 mA or 4-20 mA.

### Constant conveying

Accurate feed rates are maintained because the controller constantly monitors and automatically compensates for voltage fluctuations of  $\pm 10\%$ .

### Useful extensions

The wide choice of additional components, such as coarse/fine controllers, display devices or manual/automatic switching, enables the right solution to be found for every application.

### Internal or external fitting

Our thyristor control units are available both as build-in kits in protection system IP21 or in housing versions in IP54 completely wired with switches, monitor lamps and potentiometers.

| Technical Data      |                     |
|---------------------|---------------------|
| Mains voltage       | 115/230 V, 50/60 Hz |
| Mains frequency     | 50/60 Hz            |
| Output frequency    | 50/60 Hz            |
| Output amperage max | 5,0 A               |



A member of the

**JOEST** group

JÖST GmbH + Co. KG, Germany  
Gewerbestraße 28-32, 48249 Dülmen

Fon: +49 2590 98-0  
Fax: +49 2590 98-101

info@joest.com  
www.joest.com

